

SPECIFICATION MODEL : "PS-5" SERIES

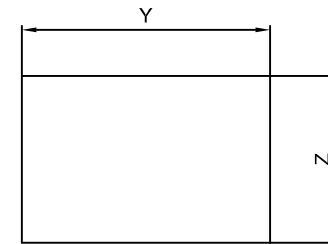
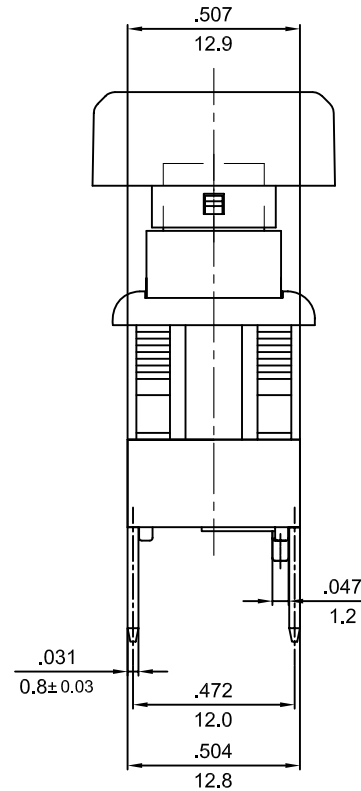
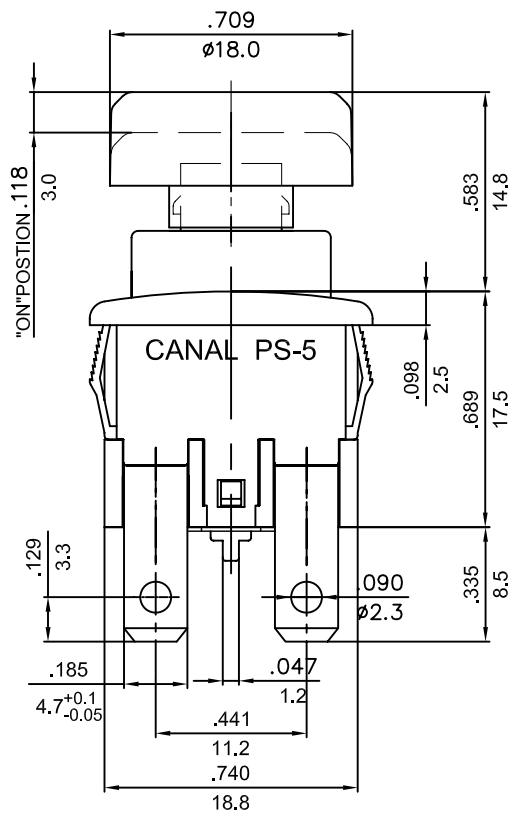
RATING:16A 125/250VAC (CUL)

16(4)A 250V ~ T125/55 (VDE/ENEC/CQC)

CONTACT RESISTANCE:20mΩ INITIAL (MAX),  
INSULATION RESISTANCE:500VDC - 100MΩ (MIN).

WITHSTAND VOLTAGE:1,000VAC 1 MINUTE.

ILLUMINATION: 200~250VAC



X PANEL THICKNESS	Y CUTOUT DIMENSION	Z CUTOUT DIMENSION
0.75~1.25mm	19.2± $\frac{0.1}{0}$ mm	12.9± $\frac{0.15}{0}$ mm
1.25~2mm	19.4± $\frac{0.1}{0}$ mm	12.9± $\frac{0.15}{0}$ mm
2~3mm	19.8± $\frac{0.1}{0}$ mm	12.9± $\frac{0.15}{0}$ mm

PANEL CUTOUT DIMENSION TABLE

NOTE:TOLERANCES UNLESS OTHERWISE SPECIFIED:± .012/0.3 (in/mm)

REVISION	DESCRIPTION	REVISED BY	TOLERANCES X.X:±0.1	ANGLE $\frac{1}{2}^\circ$	UNIT	mm	PART NAME	DWG NO
△2009.09.01	整理图面, 重新出图	刘义正	DRAWN BY 刘义正	DESIGNED BY 刘义正	SCALE	5/3	PS-5 SPEC DRAWING	S2305F
△2008.10.07	增加马力刻字标示, 取消CSA	刘义正						
△2012.05.31	增加CQC标示, 取消UL, 重新出图	赵超	CHECKED BY	APPROVED BY	DATE	2008.02.19	PART NO	PS-5-218-RGBR-SN
△2011.11.03	整理图面, 重新出图	达志各						